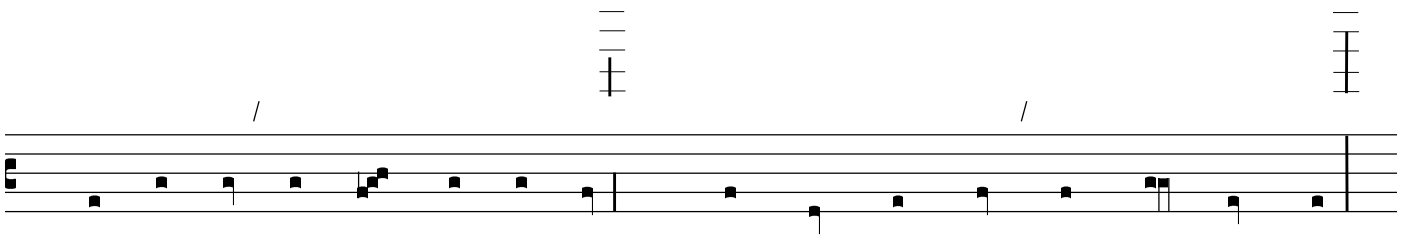
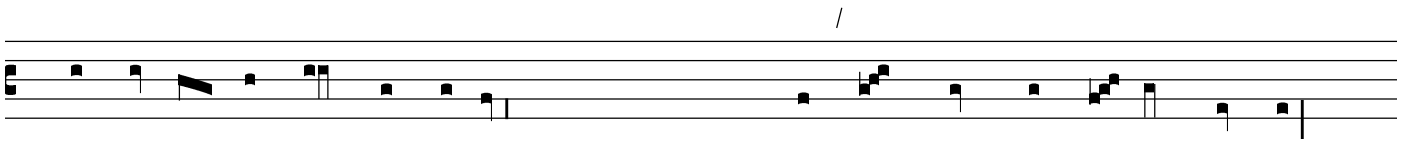
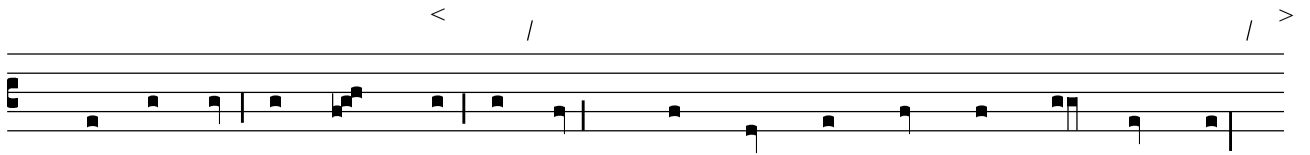
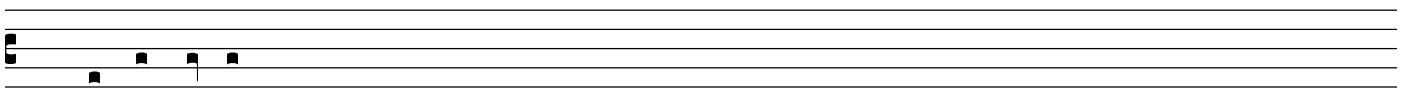


# CXL (T)



R



Handwritten musical notation on a five-line staff. The notation includes various note heads, stems, and beams. Above the staff, there is a slash (/) and a less-than-greater-than symbol (<>).

Handwritten musical notation on a five-line staff. The notation includes various note heads, stems, and beams. Above the staff, there is a slash (/) and a less-than-greater-than symbol (<>). To the right of the staff, there are two sets of horizontal lines with note heads and stems, possibly representing a chord or a specific musical structure.

[s/ R]

Handwritten musical notation on a five-line staff. The notation includes various note heads, stems, and beams. Above the staff, there are two slashes (/).

Handwritten musical notation on a five-line staff. The notation includes various note heads, stems, and beams. Above the staff, there are two slashes (/).