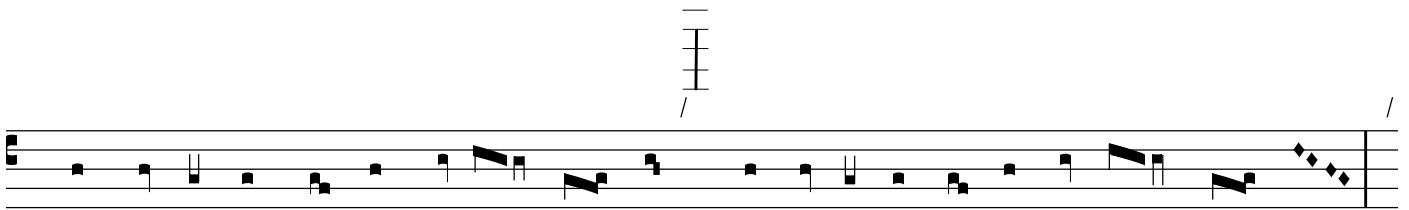
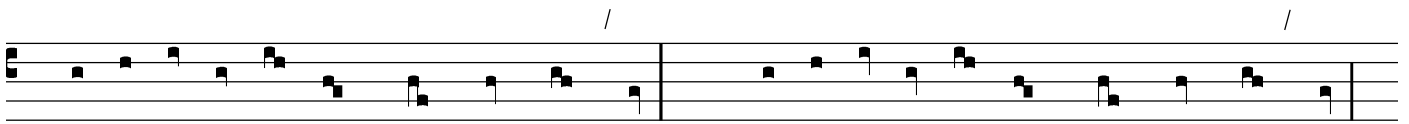
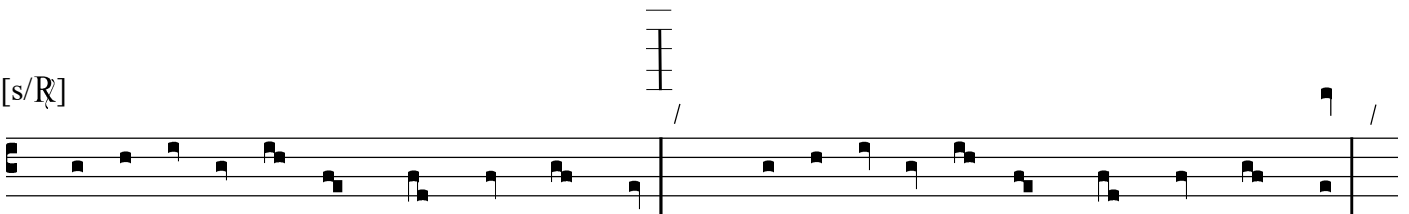


CLXX (T)



[s/R]



A musical score on a five-line staff. The notation includes a treble clef at the beginning. The piece consists of several measures of music. The notes are primarily quarter and eighth notes, with some beamed eighth notes. There are several rests throughout the piece. Above the staff, there are three vertical lines with horizontal bars, resembling a chord diagram or a specific notation for a guitar or lute. The staff ends with a double bar line.