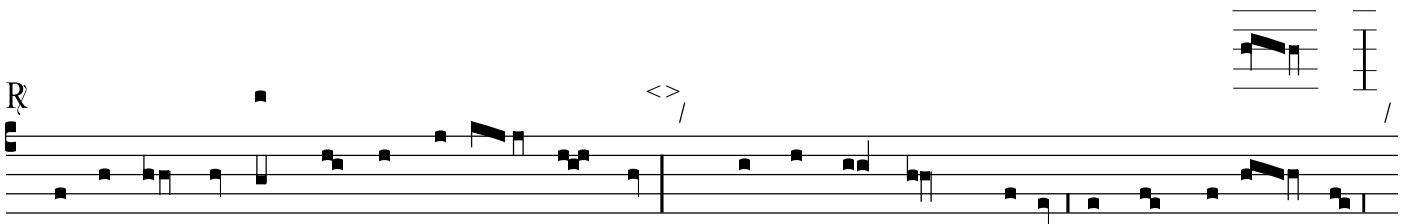
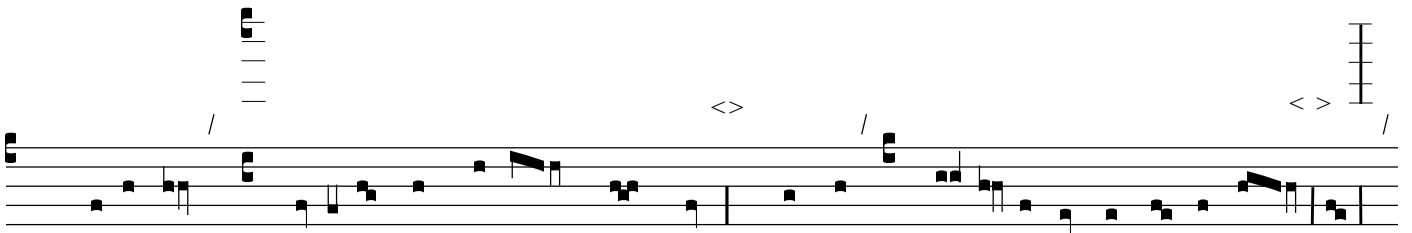
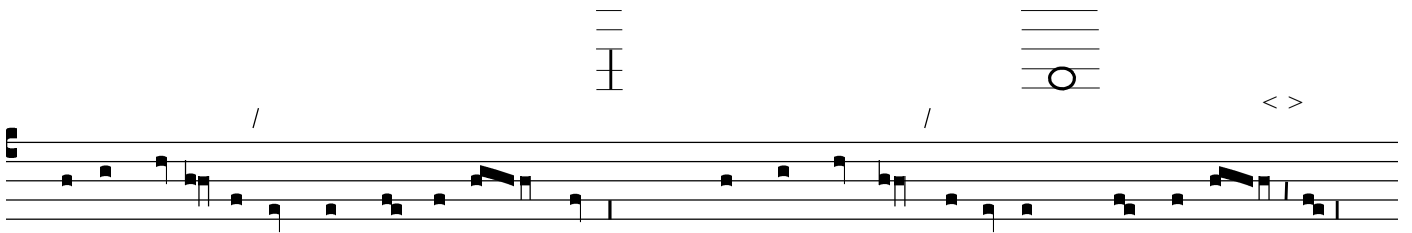
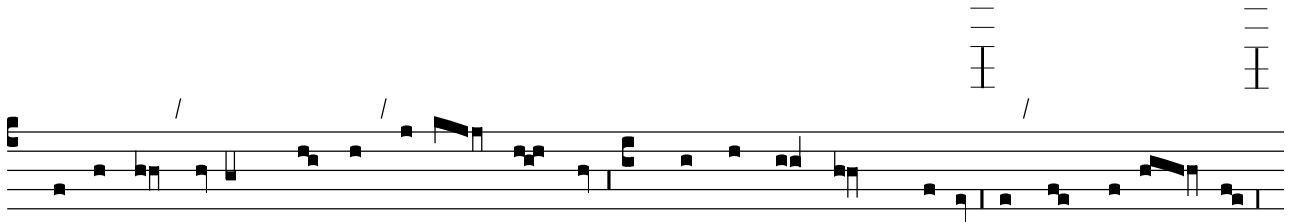


# LXIX (T)



R

Musical staff with notes and chord diagrams. The staff contains a sequence of notes with stems. Above the staff, there are two chord diagrams, each consisting of a five-line staff with black dots representing fret positions. The first chord diagram is positioned above the first measure, and the second is above the second measure. Both diagrams are preceded by a slash (/) and followed by angle brackets (<>).

Musical staff with notes and chord diagrams. The staff contains a sequence of notes with stems. Above the staff, there are four chord diagrams. The first two are on the left, the third is in the middle, and the fourth is on the right. Each diagram is preceded by a slash (/) and followed by angle brackets (<>).

Musical staff with notes and chord diagrams. The staff contains a sequence of notes with stems. Above the staff, there are two chord diagrams. The first is on the left, and the second is in the middle. Each diagram is preceded by a slash (/) and followed by angle brackets (<>). A large 'R' symbol is positioned to the left of the staff.

Musical staff with notes and chord diagrams. The staff contains a sequence of notes with stems. Above the staff, there is one chord diagram on the right side, preceded by a slash (/) and followed by angle brackets (<>).

Musical staff with notes and chord diagrams. The staff contains a sequence of notes with stems. Above the staff, there are three chord diagrams. The first is in the middle, the second is on the right, and the third is on the far right. Each diagram is preceded by a slash (/) and followed by angle brackets (<>).

Musical staff with notes and chord diagrams. The staff contains a sequence of notes with stems. Above the staff, there is one chord diagram on the left side, preceded by a slash (/) and followed by angle brackets (<>). A large 'R' symbol is positioned to the left of the staff.

/

The image shows a musical staff with four horizontal lines. The notation includes several groups of notes, some connected by beams. A single vertical bar line is positioned in the middle of the staff. A slash '/' is placed above the top line of the staff, centered above the first group of notes.