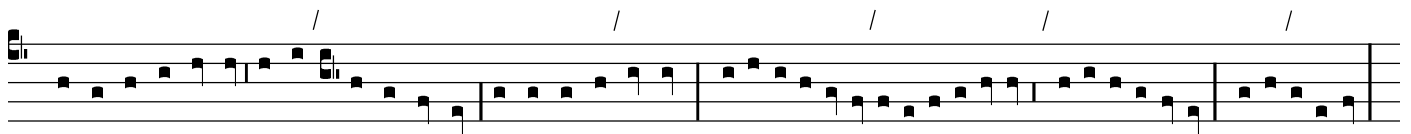
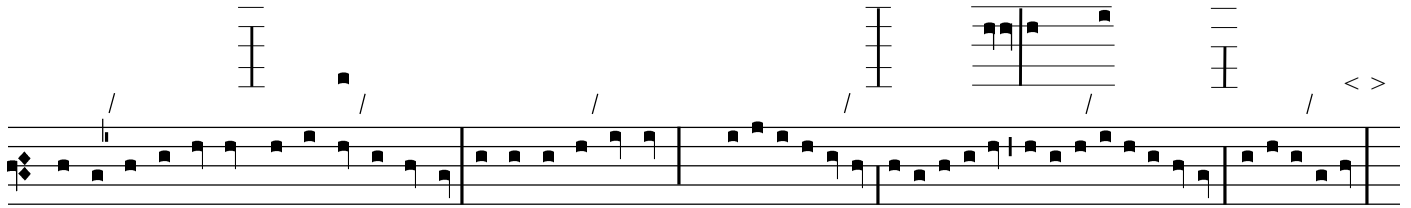
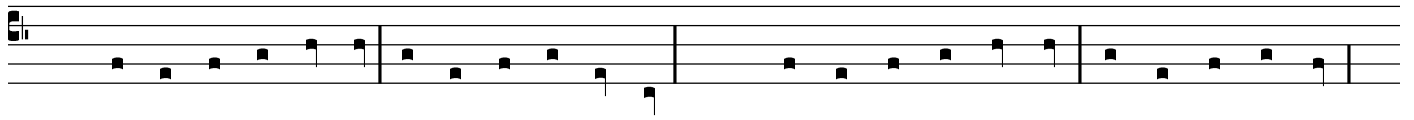


# LXXIX (T)



R



A musical staff consisting of five horizontal lines. It begins with a treble clef (C-clef on the first line) and a key signature of one flat (B-flat). The staff contains a sequence of notes: a quarter note on G4, an eighth note on A4, a quarter note on B4, an eighth note on C5, a quarter note on D5, an eighth note on E5, and a quarter note on F5. This sequence is followed by a vertical bar line. The second measure contains a quarter note on E5, an eighth note on D5, a quarter note on C5, an eighth note on B4, a quarter note on A4, an eighth note on G4, and a quarter note on F4. This is followed by another vertical bar line. The third measure contains a quarter note on G4, an eighth note on A4, a quarter note on B4, an eighth note on C5, a quarter note on D5, an eighth note on E5, and a quarter note on F5. This is followed by a vertical bar line. The fourth measure contains a quarter note on E5, an eighth note on D5, a quarter note on C5, an eighth note on B4, a quarter note on A4, an eighth note on G4, and a quarter note on F4. The staff concludes with a final vertical bar line. Above the staff, there are two diagonal slashes (/) positioned above the first and third measures.