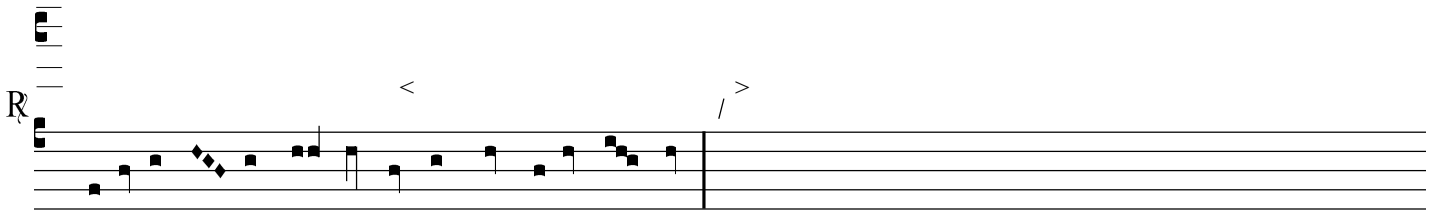
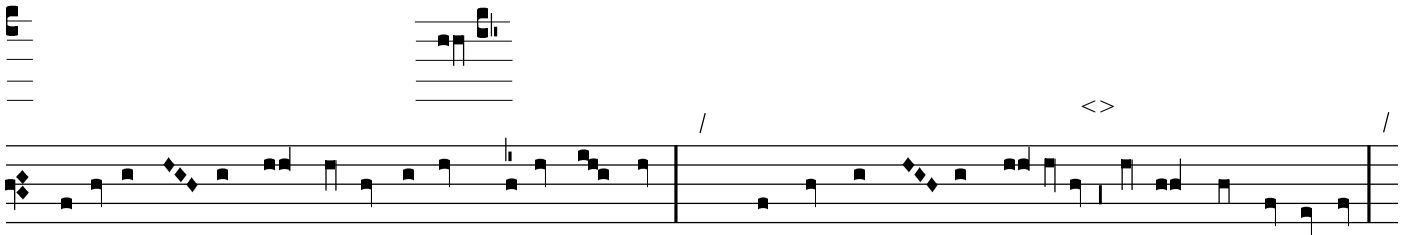
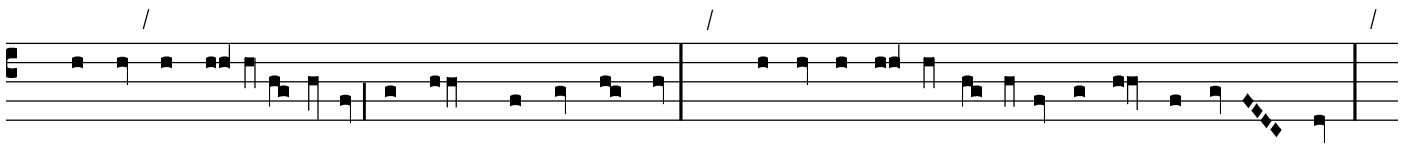
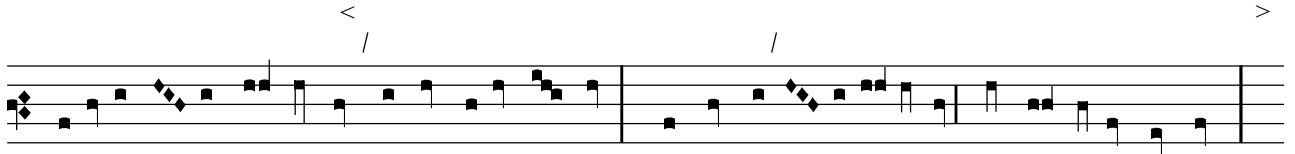


LXXXV (T)



A musical staff with two lines. It contains a sequence of notes and rests. A vertical bar line is present. A slash mark is above the staff. At the end of the staff, there is a vertical line with a horizontal bar across it, and another slash mark.

A musical staff with two lines. It contains a sequence of notes and rests. A vertical bar line is present. A slash mark is above the staff. At the end of the staff, there is a vertical line with a horizontal bar across it, and another slash mark.

A musical staff with two lines. It contains a sequence of notes and rests.

R

A musical staff with two lines. It contains a sequence of notes and rests.

A musical staff with two lines. It contains a sequence of notes and rests. A vertical bar line is present. A slash mark is above the staff. At the end of the staff, there is a vertical line with a horizontal bar across it, and another slash mark.

A musical staff with two lines. It contains a sequence of notes and rests.

A musical staff with two lines. It contains a sequence of notes and rests. A vertical bar line is present. A slash mark is above the staff. At the end of the staff, there is a vertical line with a horizontal bar across it, and another slash mark.

R

A musical staff with two lines. It contains a sequence of notes and rests.