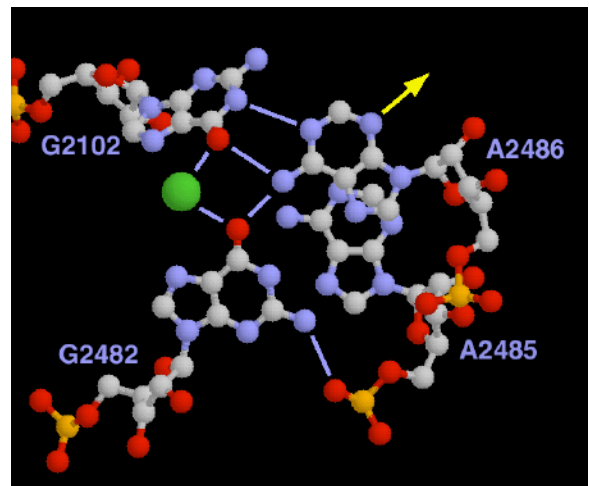
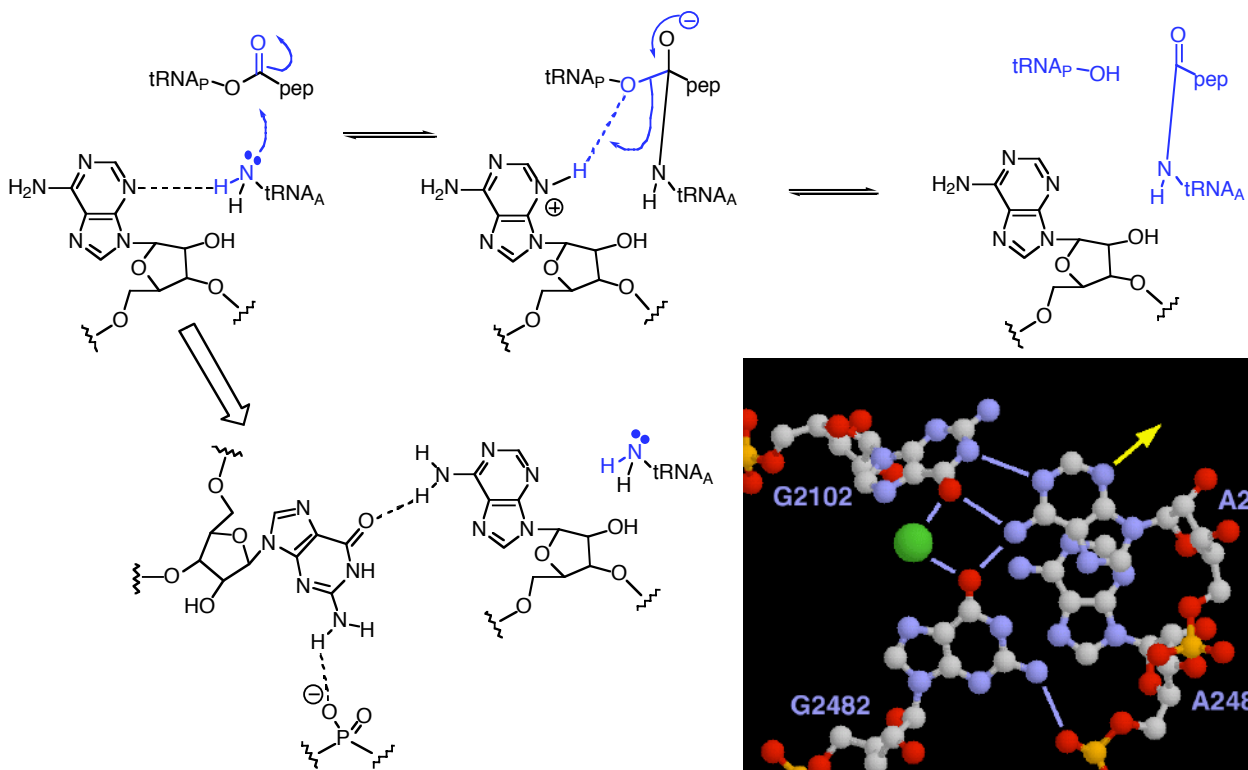
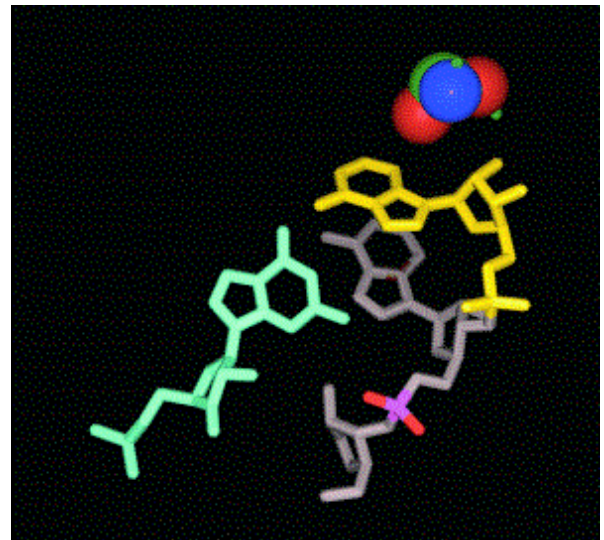
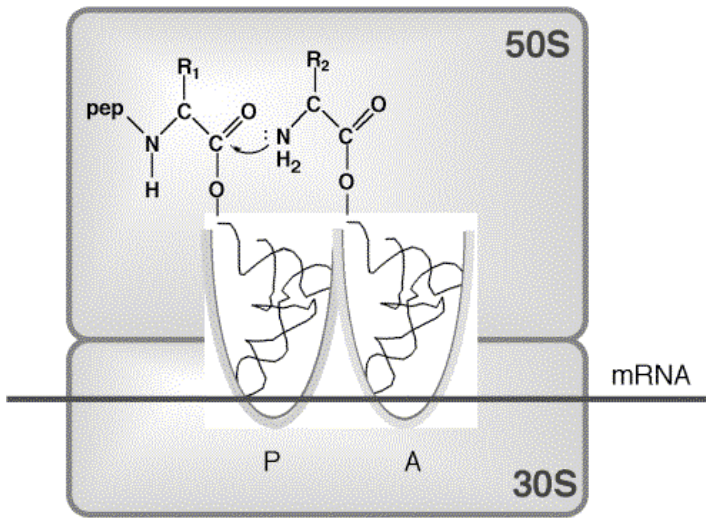
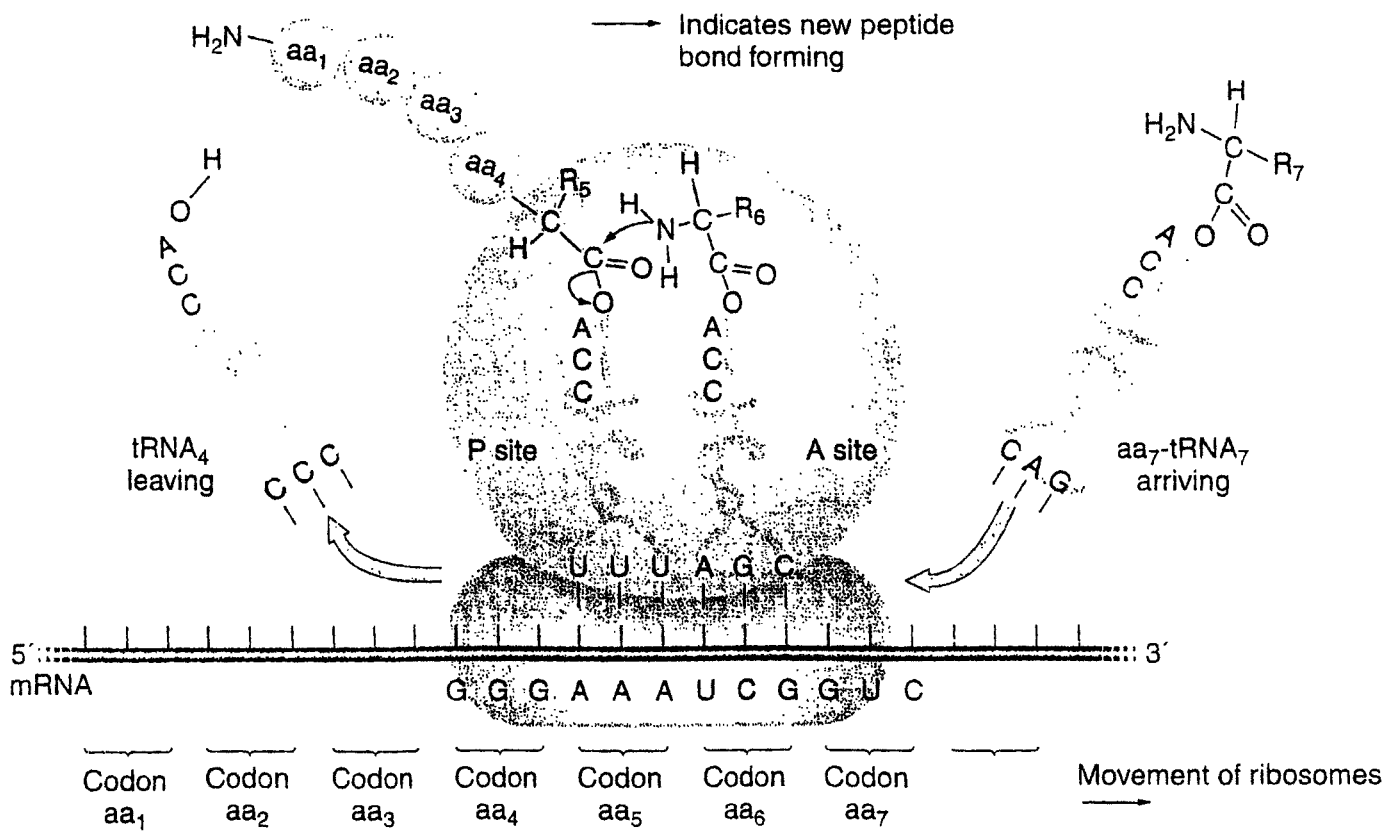
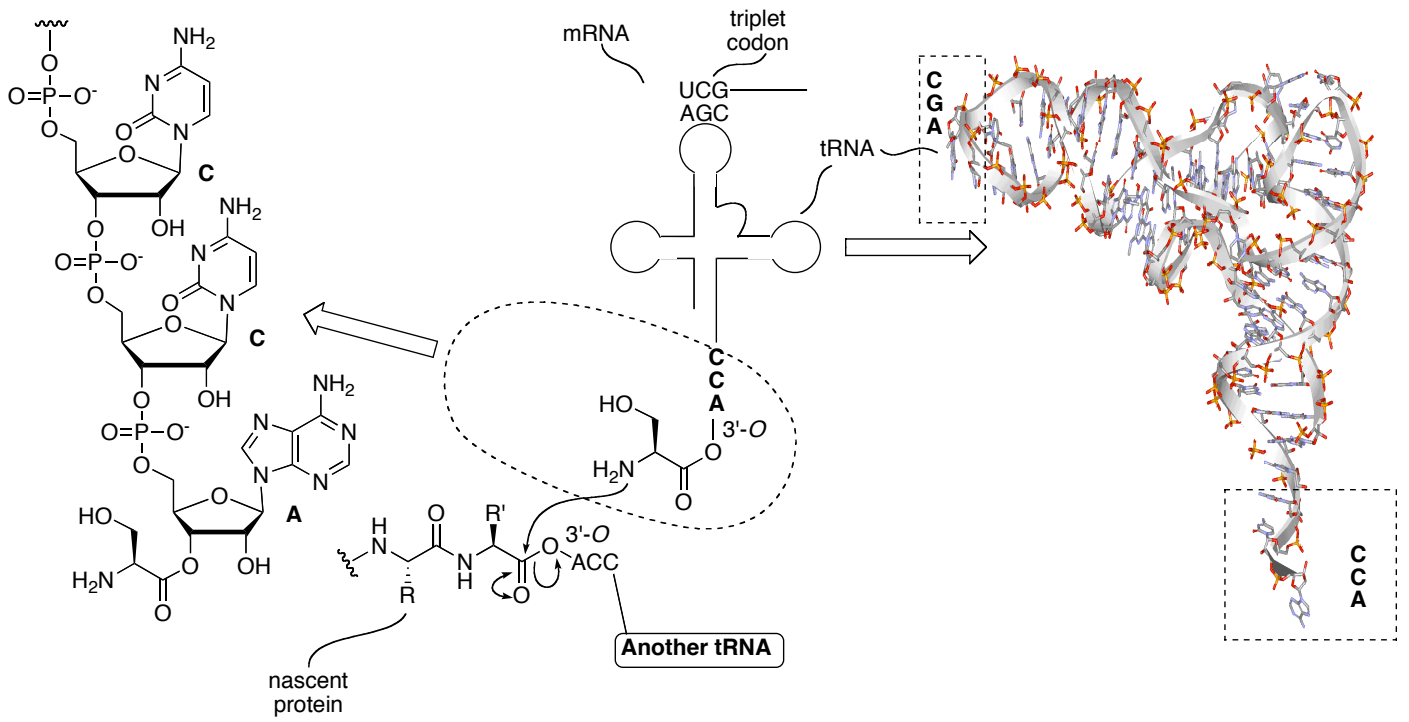
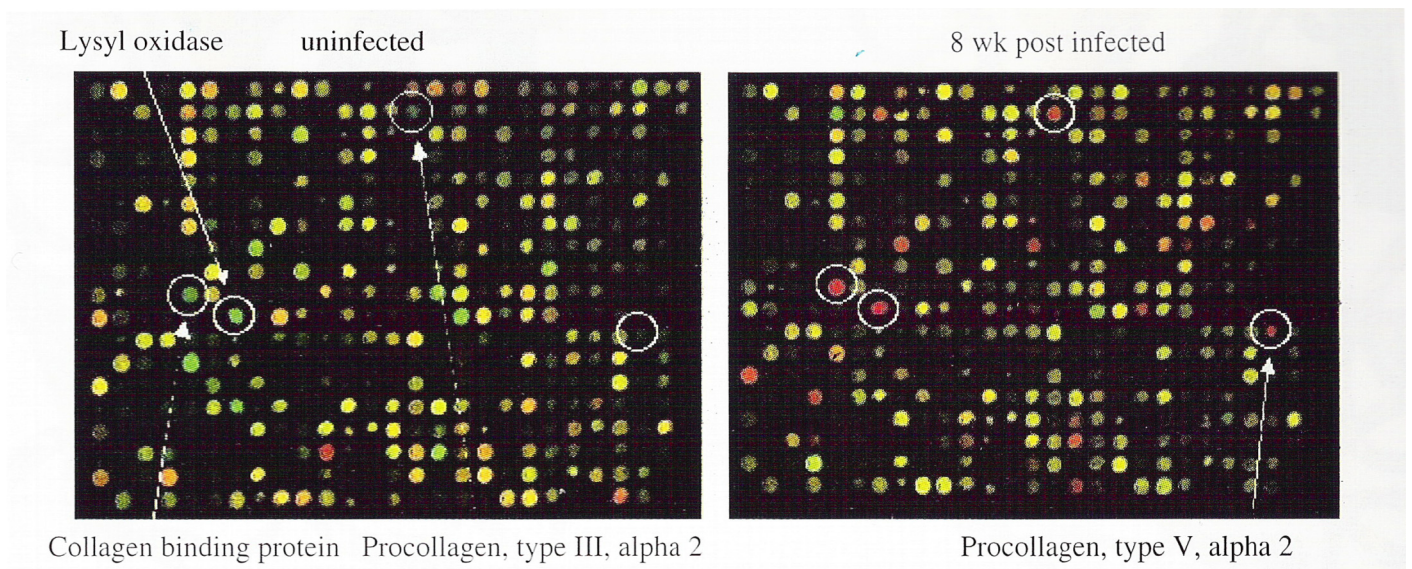
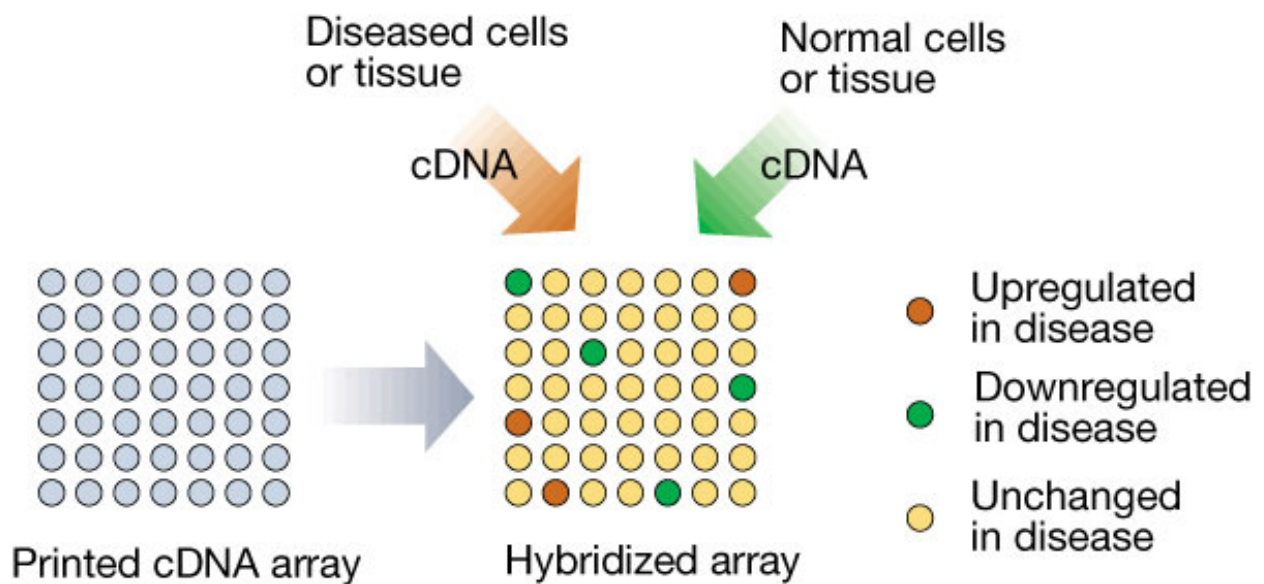


The Ribosome





.....|UUU|UUA|GGG|AAA|U|CG|GUC| → |UUU|UUA|GGG|AAA|U|GC|GUC|
 Phe Leu Gly Lys Ser Val → Phe Leu Gly Lys Cys Val



Additional Reading:

- Ashburner *et al*; Gene ontology: tool for the unification of biology. The Gene Ontology Consortium. *Nature Genetics* **2000**, 25, 25-29
- Ursing *et al*; EXProt: a database for proteins with experimentally verified function. *Nucleic Acids Research* **2002**, 30, 50-51.
- Orengo *et al* CATH- A Hierarchic Classification of Protein Domain Structures. *Structure* **1997**, 5, 1093-1108.
- Pearl *et al* Assigning genomic sequences to CATH *Nucleic Acids Research*. **2000**, 28, 277-282
- Arava *et al* Genome-wide analysis of mRNA translation profiles *Saccharomyces cerevisiae*, *PNAS*, **2003**, 100, 3889.
- "Microarrays and Microplates" Ye & Day (eds); BIOS Scientific 2003 *A good overview of the details of achieving the efficient use of array technology.*