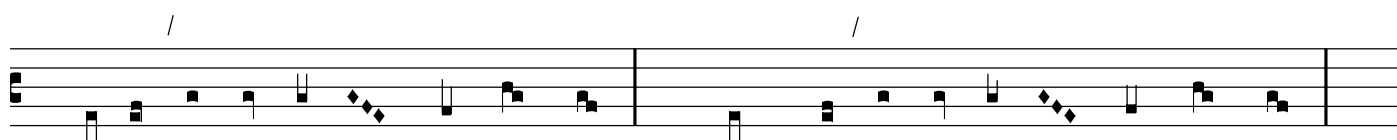
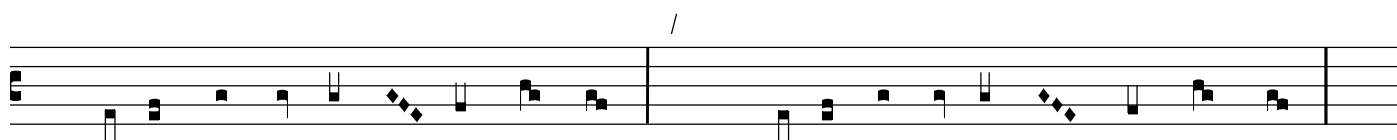
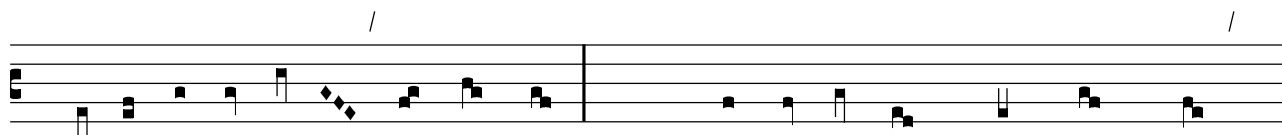


CXX (T)



R



First staff of music with a treble clef, a key signature of one flat, and a common time signature. It contains two measures of music. The first measure has a slash above it. The second measure has a slash above it and ends with a double bar line and a repeat sign (< >).

Second staff of music with a treble clef, a key signature of one flat, and a common time signature. It contains two measures of music. The second measure has a slash above it.

Third staff of music with a treble clef, a key signature of one flat, and a common time signature. It contains two measures of music. Both the first and second measures have slashes above them.

Fourth staff of music with a treble clef, a key signature of one flat, and a common time signature. It contains two measures of music. Both the first and second measures have slashes above them.