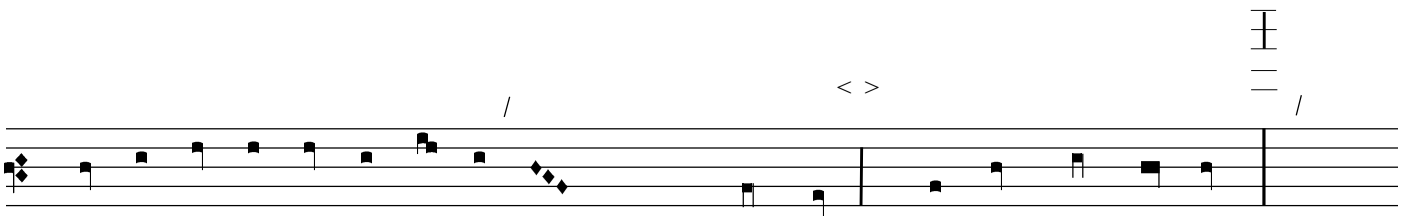
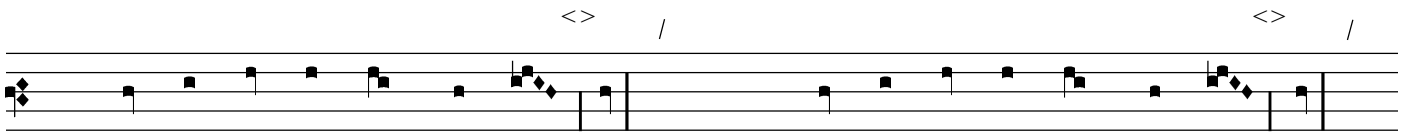
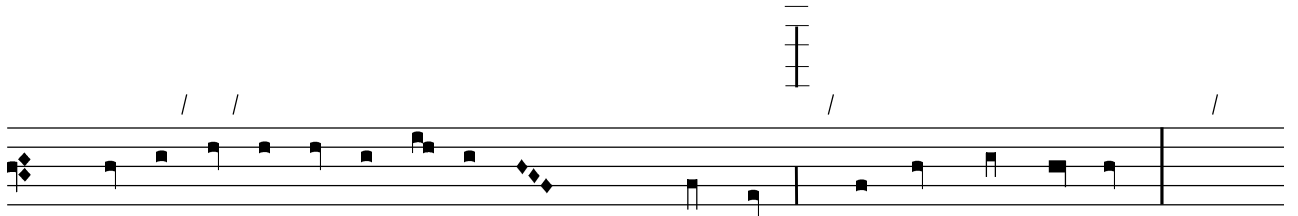


LXXXIII (T)



Musical staff with notes and accents. The staff contains two measures of music. The first measure has a $\langle \rangle$ accent above the first half and a / slash above the second half. The second measure has a $\langle \rangle$ accent above the first half and a / slash above the second half.

Musical staff with notes and accents. The staff contains two measures of music. The first measure has a / slash above the first half and a / slash above the second half. The second measure has a / slash above the first half and a / slash above the second half.

Musical staff with notes, accents, and a 'R' symbol. The staff contains two measures of music. The first measure has a 'R' symbol above the first half and a $\langle \rangle$ accent above the second half. The second measure has a $\langle \rangle$ accent above the first half and a $\rangle /$ accent above the second half.

Musical staff with notes and accents. The staff contains two measures of music. The first measure has a / slash above the first half and a / slash above the second half. The second measure has a / slash above the first half and a / slash above the second half.

Musical staff with notes and accents. The staff contains two measures of music. The first measure has a / slash above the first half and a / slash above the second half. The second measure has a / slash above the first half and a / slash above the second half.