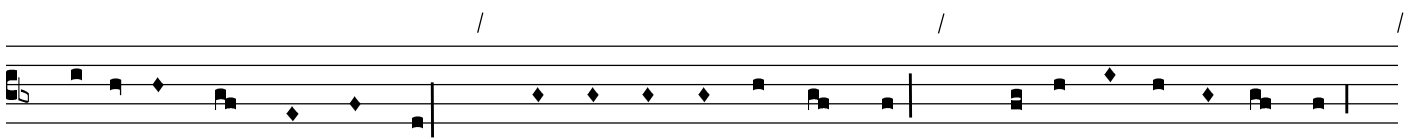
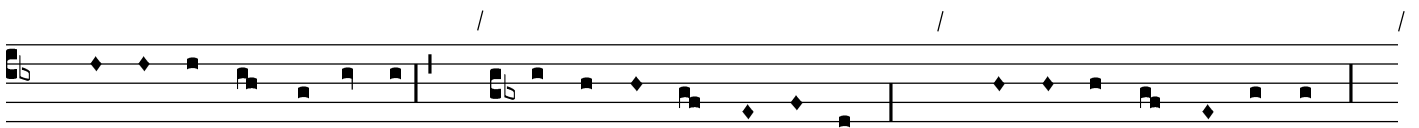
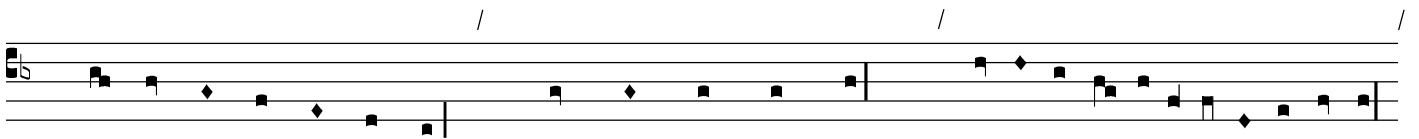
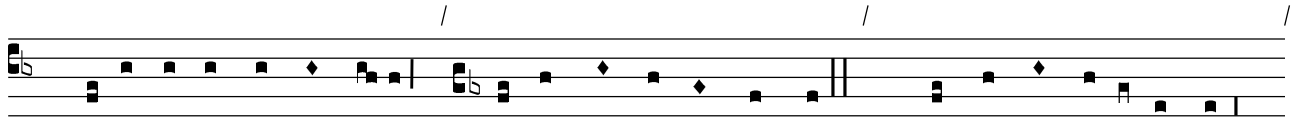


LXXII (To) / 57



A musical staff with a treble clef and a key signature of one flat (Bb). The staff contains a sequence of notes and rests, divided into three measures by vertical bar lines. Above the staff, there are three slanted forward slashes (/) positioned above the first, second, and third measures. The notes are represented by black squares with stems, and some have diamond-shaped flags. The first measure contains six notes, the second contains seven notes, and the third contains six notes.

A musical staff with a treble clef and a key signature of one flat (Bb). The staff contains a sequence of notes and rests, divided into two measures by a vertical bar line. The notes are represented by black squares with stems, and some have diamond-shaped flags. The first measure contains five notes, and the second measure contains four notes.