

- Research methodology: Palaeolithic Survey Grid (**PSG**).
- GPS coordinate system: UTM WGS84 (used in this report).
- Specific area of survey: **PSG C20** (centred on E50.809168:N25.173647).
- Mode of survey: 4x4 vehicle and on foot.
- Duration of survey: 2 hours.
- Team members: Julie Scott-Jackson, William Scott-Jackson, Óskar Gísli Sveinbjarnarson..

**Objectives:**

The aim of this field survey (16<sup>th</sup> November 2010), was to investigate the Palaeolithic potential in **PSG C20**, an area to the West of Highway 39 (Figures 1, 2 and 3).

**Route:**

We travelled North West on Highway 30 and then turned South onto Highway 39 at Umm Bab to access **PGS C20** (Figure 1), approximately 2km South of Umm Bab. Access to **PGS C20** is relatively easy as there are several tracks westwards from Highway 39. The ridges which overlook the Gulf of Bahrain and Saudi Arabia can be seen from the Highway.

**PSG C20** (centred on GPS Ref E50.809168:N25.173647)

**Description (Topography, landmarks, vegetation, cultural features)**

The limestone ridge, centred at E50.798336 N25.187804, in **PSG C20** is on the Western edge of the plateau (Figure 5). From the top of the ridge the Gulf of Bahrain is clearly visible (Figure 4).

Close to the ridge in **PSG C20** is a camel farm (Figure 6) at E50.800664: N25.190357. Also noted was a small oil/gas installation at E50.798502:N188245. Very few trees and vegetation were seen.

**Geology, Geomorphology (wadis, erosion features etc)**

The highly eroded limestone ridges in **PSG C20** stand at ~55m asl, above the plateau (at ~45m asl).

A variety of angular and rounded clasts (e.g. shale, mudstones and gravels) were present on the ridge.

No knappable material was found.

**Archaeology, Finds (location, condition, orientation etc)**

No archaeology present.

**Recommendations**

Further investigation of the ridges and hills in **PSG C20** is required, as this initial investigation was curtailed by heavy rain.

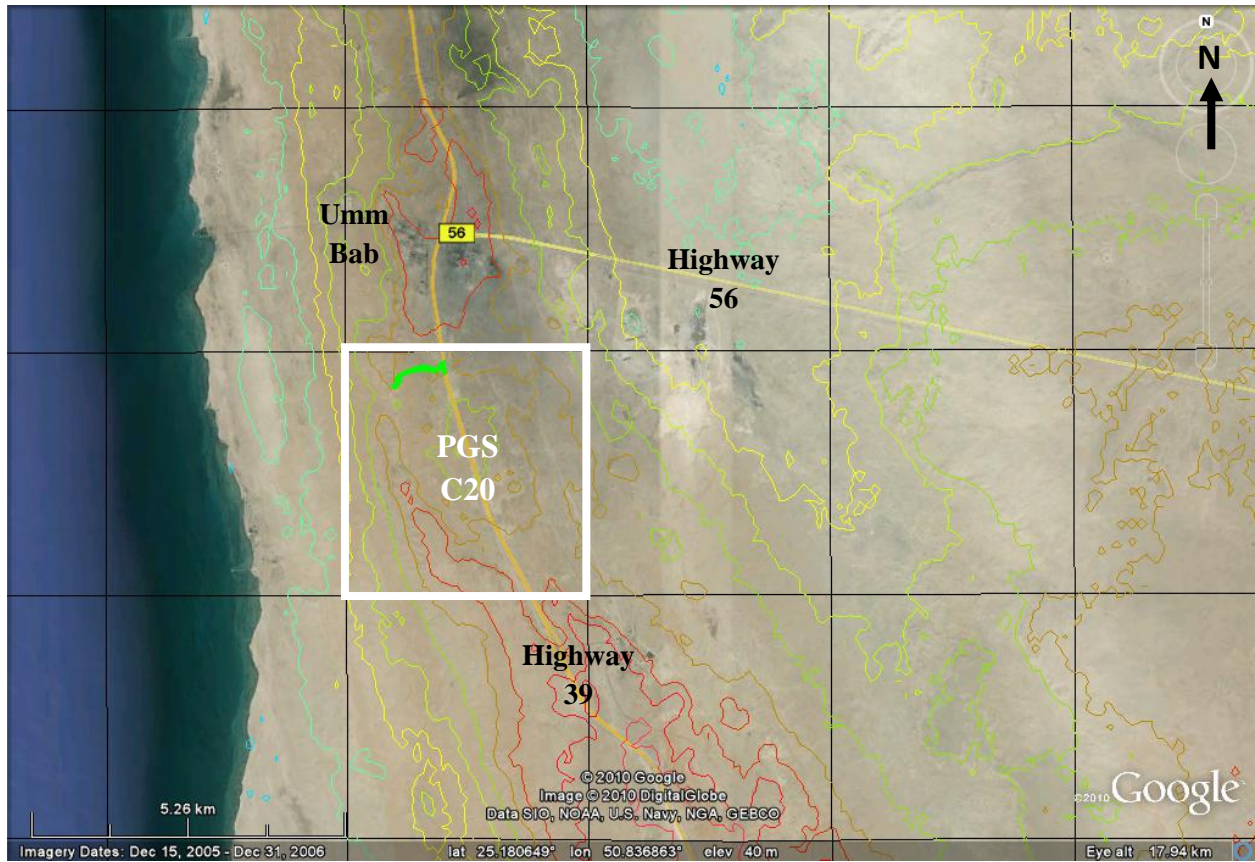


Fig 1: Palaeolithic Grid Square **PGS C20** GPS Ref (UTM WGS84): centred on E50.809168:N25173647 (tracking shown in green).

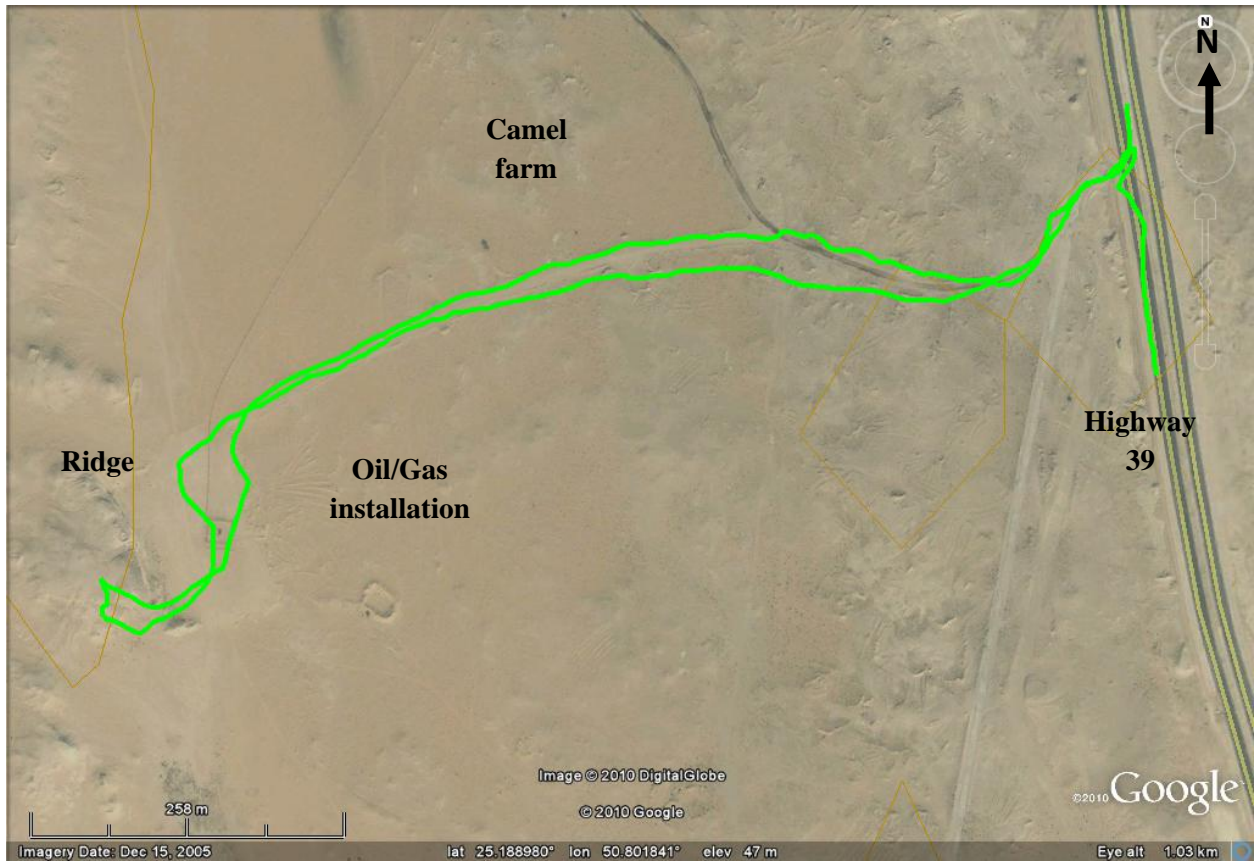


Fig 2: Palaeolithic Grid Square **PGS C20** GPS Ref (UTM WGS84): Ridge at ~E50.798336:N25.187804 (tracking shown in green).



Fig 3: Palaeolithic Grid Square **PGS C20** GPS Ref (UTM WGS84): Detail of ridge at ~E50.798336:N25.187804 (tracking shown in green).



Fig 4: **PSG C20**. View to West over Gulf of Bahrain.



Fig 5: **PSG C20**. View to East over plateau.



Fig 6: **PSG C20**. Camel farm just below ridge at E50.800664: N25.190357