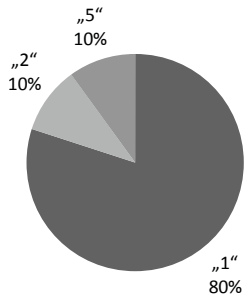


Distribution of subjective content grade

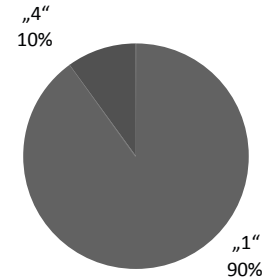


# Master

## Labor and Population Economics

JProf. Petr Sedlacek, Ph.D.

Distribution of subjective lecturer grade



Filled questionnaire 10  
Approx. no of participants<sup>1</sup> 1

Questions about the lecture <sup>2</sup>	#	Mean average	Median	SD
The structure of the lecture is comprehensible	9	1,3	1	0,5
The content is explained comprehensibly	10	1,0	1	0,0
By using examples the explication of the theory was well illustrated	10	1,2	1	0,6
Aids (beamer, blackboard, ...) are used effectively during the lecture	9	1,1	1	0,3
Is lecture documentation available (lecture notes/slides)? If so <sup>3</sup> ...	10	1,0	1	0,0
... is it available online (ILIAS/eCampus/homepage)?	10	1,0	1	0,0
... does it cover the lecture content?	10	1,6	1,5	0,7
... is the content of the documentation useful?	10	1,7	2	0,6
Are further work aids available (references ...)? If so <sup>3</sup> ...	9	1,0	1	0,0
... are they available online (ILIAS/eCampus/homepage)?	7	1,4	1	1,0
... are they helpful in understanding the content?	9	1,6	2	0,5
<b>Looking back<sup>4</sup> ...</b>				
... my previous knowledge was ...	10	1,9	2	0,3
... the speed of the lecture was too ...	10	1,9	2	0,3
... the scope of the content was ...	10	1,8	2	0,6
... the requirements were ...	9	1,9	2	0,6
... I received a good overview over the topic <sup>2</sup>	9	1,0	1	0,0
<b>Subjective content grade<sup>5</sup></b>	<b>10</b>	<b>1,6</b>	<b>1,3</b>	<b>1,2</b>

Questions about the lecturer				
The lecturer <sup>2</sup> ...				
... speaks loudly and clearly	10	1,2	1	0,4
... explains the content well	9	1,0	1	0,0
... is well prepared	9	1,0	1	0,0
... motivates students for the subject	10	1,1	1	0,3
... is dedicated	9	1,0	1	0,0
... allots the time at his/her disposal well	9	1,0	1	0,0
... answered questions understandably	9	1,2	1	0,6
The written presentation on blackboard <sup>2</sup> ...				
... is well readable	9	1,2	1	0,4
... is well structured	7	1,1	1	0,3
<b>Subjective lecturer grade<sup>5</sup></b>	<b>10</b>	<b>1,3</b>	<b>1</b>	<b>0,9</b>

<sup>1</sup>1 = 1-50    4 = 151-200    <sup>2</sup>1 = strongly agree    3 = disagree    <sup>3</sup>1 = yes    <sup>4</sup>1 = too high/wide    <sup>5</sup>1 = very good    4 = pass    <sup>6</sup>1 = 0-1 hrs    4 = 3-4 hrs  
 2 = 51-100    5 = 201-400    2 = agree    4 = strongly disagree    2 = no    2 = exactly right    2 = good    5 = fail    2 = 1-2 hrs    5 = 4-6 hrs  
 3 = 101-150    3 = satisfactory

# Master

## Labor and Population Economics

JProf. Petr Sedlacek, Ph.D.

Students	#	Mean average	Median	SD
average study semester	10	2,9	3	0,9
<b>Sex</b>				
male	6	equates: 60,0%		
female	4	equates: 40,0%		
<b>Study program</b>				
Master Economics only	10	equates: 100,0%		
How many times did you not attend the lecture (weekly)?				
less than twice	7	equates: 70,0%		
2 - 6 times	2	equates: 20,0%		
more than 50% of the time	1	equates: 10,0%		
Were you also attending the tutorial in addition to the lecture? <sup>3</sup>				
Preparation and follow-up outside the lecture (weekly) <sup>6</sup>	10	2,8		0,6

### What did you like?

The serious of this cause.

I liked the speed of the lecture very much, the interactive way of organizing lectures and tutorials. I also appreciate the way we went in deep for several topics.

Well-structured!

Content structure really good. Informative lecture within macroeconomics.

Many graphs, good structure, great explanation, useful problem sets, work with data, encouraging lecturer.

Structured, well-prepared lectures, the moderate speed of the lecture, quite interactive class.

### What didn't you like?

High level and speed.

There are a lot of open questions in the slides and sometimes its hard to make bullet points to all questions and they are not fully answered in the summary.

Assignments too often.

Slides don't cover everything. Crucial points only on blackboard available.

<sup>1</sup>1 = 1-50    4 = 151-200  
2 = 51-100    5 = 201-400  
3 = 101-150

<sup>2</sup>1 = strongly agree    3 = disagree  
2 = agree    4 = strongly disagree

<sup>3</sup>1 = yes  
2 = no

<sup>4</sup>1 = too high/wide  
2 = exactly right  
3 = too low/narrow

<sup>5</sup>1 = very good    4 = pass  
2 = good    5 = fail  
3 = satisfactory

<sup>6</sup>1 = 0-1 hrs    4 = 3-4 hrs  
2 = 1-2 hrs    5 = 4-6 hrs  
3 = 2-3 hrs